

L'Elan, *Bulletin de la Société Honoraire de Français*

Vol. 29, No. 1

Fall 2000

“L'homme qui sait deux langues en vaut deux!”

Lettre de la Présidente

Célébration à Paris

Sponsors met on Monday, 17 July, as a regular session of the AATF annual convention in the Palais des Congrès, Paris. The theme of a birthday party, including small favors of France, completed the year-long celebration of the Société's 50th anniversary year.

A number of changes for the 2000-01 school year were announced: the retirement from SHF of Dr. Stephen Foster; a new Executive Secretary; a new editor of *L'Elan*. Sponsors attending indicated that they would prefer to receive *L'Elan* in October and March. The brochure and handbook projects are on hold until the transfer of the national office is complete.

General consensus favored a single address from which a number of SHF items, such as certificates, seals, pins, cords, tassels, and t-shirts, may be ordered.

The importance of a detailed local constitution and by-laws was discussed. Several sponsors have dealt, during the past couple of years, with situations which called into question the term “honor” in Société Honoraire de Français. The national documents are general in nature and do not specify the handling of disciplinary infractions and/or consequent removal from membership. Questions of initial eligibility, continued enrollment, travel/study awards, and service projects were also discussed.

Growth in the number of chapters continues, with the chartering of the 2000th active chapter on May 1, 2000. It was suggested that publicity be continued in the *AATF National Bulletin*, on the AATF web site, and at state, regional, and national conferences.

En avant!

Sharon B. Rapp
National President SHF
1817 South Blvd.
Conway, AR 72032-6205
sbrapp@conwaycorp.net

Kudos to Dr. Stephen Foster

Merci mille fois!

We want to express to Stephen Foster our thanks for his thirty years of faithful service to SHF as Executive Secretary. Regina Grammatico of Amity Regional High School, Woodbridge, CT, says it so well: “...I would like to express my appreciation for all that Stephen Foster has done over the years. He is difficult to replace.” Indeed!

True to form, however, before leaving on his well earned research sabbatical in France, Dr. Foster brought chapter lists up to date, printed mailing labels for the fall issue of *L'Elan*, and did his part to make the transition as smooth as possible for the **two** new people who will now take over aspects of the work he did for us (see *Chiffres et lettres* on page seven).

Our good wishes for a pleasant and productive year abroad accompany him. Ce n'est qu'un au revoir, monsieur—et un grand merci!

Nouveaux Chapitres *

- | | |
|------|---|
| 3220 | Starr's Mill HS, Fayetteville, GA, M. Scott |
| 3221 | Lakeland Reg. HS, Wanaque, NJ, K. Galica |
| 3222 | Katella HS, Anaheim, CA, L. Pedersen |
| 3223 | Jefferson City HS, MO, S. Ramsey |
| 3224 | *Palisades HS, Kinterville, PA, M. Neiman |
| 3225 | Brevard HS, Brevard, NC, P. Averette |
| 3226 | Winder-Barrow HS, Winder, GA, C. O'Bannon |
| 3227 | Banneker Academic HS, Washington, DC, C. McLeod |
| 3228 | New Prairie HS, New Carlisle, IN, B. Seeley |
| 3229 | Germantown HS, Germantown, TN, C. Westbrook |
| 3230 | Kings Park HS, Kings Park, NY, Y. Kamerling |
| 3231 | Gulf Coast HS, Naples, FL, A. O'Neil |
| 3232 | Coral Reef HS, Miami, FL, I. Matos |
| 3233 | Bryan HS, Bryan, TX, M. Thomas |
| 3234 | St. John's NW Mil. Acad., Delafield, WI, D. Hammond |
| 3235 | South Side HS, Rockeville Centre, NY, J. Antosca |
| 3236 | Nottoway HS, Nottoway, VA, M. Lyons |
| 3237 | Russellville HS, Russellville, AR, M-C. Freeman |
| 3238 | Barnstable HS, Hyannis, MA, A. Golden |
| 3239 | Bridgewater Baritan HS, Bridgewater, NJ, J. Haff |

Reports from the Chapters

Many chapters of the SHF participate in teaching/tutoring/orientation/enrichment programs at elementary schools in their district to promote the study of French. Others are involved in community projects to help needy children/families or the environment or to host students from other countries. Money-making projects provide scholarships, defray costs of field trips, and allow donations to international causes (Médecins sans frontières, trees for Versailles, sponsorship of a child, Samaritan's Purse). Several chapters have inaugurated web sites/pages. Sponsors continue to seek out French elements in their community in order to make connections, to celebrate National French Week, and to inspire their students. The following are additional ideas from the annual reports.

To be considered for induction into the **Wausau West High School (WI)** chapter, students must write a paragraph about their involvement with French to be read at the ceremony.

Fleming County High School (KY) distributed AATF brochures to the student body during National French Week. At a booth, during lunch, members gave out a "quiz" (written by the SHF President) to correspond to the brochure. Students who answered the quiz correctly were eligible for a \$10 cash prize.

During National French Week, the **Wichita North High School (KS)** chapter hosted a dance for the entire school district's French students. The 300 attendees enjoyed French decorations, music and videos. **Wichita High School West (KS)** hosted a "Dinner for Dignitaries." Influential people from different walks of life were served by students and entertained by the winning musicians from the preceding French Day competitions.

Maryvale Prep (MD) sponsored an assembly for the whole school. Members of the Baltimore Opera Company sang arias in different languages and spoke to the students about their own language study and preparation.

à suivre à la page 3

Candidates for membership at **Mercy High School (MI)** participated in "The Taste of France." Each helped to present a French dish and an explanation in French of the dish and its origins. Teams who scored the highest in their category (hors d'oeuvre, plat principal, dessert) received a prize.

Marie S. Curie Metro High School (IL) presented, in a joint venture with the performing arts department, a National French Week Assembly. They included francophone countries' flags, the French national anthem, an explanation of "le monde francophone" and contributions to world culture, dance, vocal and instrumental music, and an appearance by "Marie Antoinette."

Members of the chapters at **Del Valle High School (TX)** and **Elizabethtown High School (KY)** served a French breakfast to teachers.

Half Hollow Hills High School East (NY) enjoyed a mystery dinner theater. Thirteen students arrived in costume, exchanged clues and comments as they dined, and unraveled the mystery while speaking in French throughout the evening.

The chapter at **Cherry Creek High School (CO)** made 65 reader and math booklets for children in French to be sent to Senegal through the Peace Corps World Wise School program.

Rock Bridge High School (MO) hosted the awards ceremony for all Columbia school winners in the National French contest.

During National French Week at the **Salesianum School (DE)**, members prepared materials for, and celebrated mass in, French.

At **Haven High School (SD)**, members made a crèche and santons representing the occupations of the community.

Every Tuesday at 7:30 am, SHF members at **Grissom High School (AL)** sponsor a peer-tutoring session to give additional practice to French I and II students.

Midland Park High School (NJ) invites alumni who have gone on to use French in their careers to come back as guest speakers for their induction ceremony. This year's speaker, who works for a major airline, encouraged students to continue their studies so that they will be well prepared to utilize their language skills in the profession they choose.

*2000 en 2000

**Nous y sommes arrivés! 2000 en 2000!* One of the goals set for the SHF birthday celebration year was to reach 2000 active chapters in the year 2000. That event occurred on May 1 (appropriate date, n'est-ce pas?) with the chartering of the chapter at Palisades HS in Kintnersville, PA. We celebrate all the new chapters and look forward to working together.

Questions et Réponses

Q: Do we need a local constitution?

A: It's always a good idea to add to the by-laws of the SHF national constitution which purposely remains vague in certain areas to accommodate so many schools. If membership will be forfeited should certain standards not be met, then the process must be described in the local by-laws. When parents contact the national office to ask about selection or dismissal criteria, they are referred to the particular school and sponsor in the case.

Q: When do most schools hold initiation?

A: Usually in the spring (April and May), and usually in level III (another reason for a by-law, because the national constitution allows membership in the second semester of Level II).

Q: Can we initiate foreign exchange students?

A: We encourage you to do so. You might want to establish at the local level associate (for the exchange period) and honorary (for guests and administrators) memberships.

Q: Does the SHF have an emblem I could use on invitations?

A: No, but it would be a good project for a school to design one to be published in an issue of *L'Élan* and used by all of us.

Q: What can SHF members wear at graduation?

A: At the meeting in Quebec, sponsors chose braided blue/white/red cords available from Herff Jones (see page 7). White cords, representing the humanities, are usually available from the company that supplies the school's caps and gowns. Some school administrators have permitted only National Honor Society students to wear cords; unfortunately, this local decision can not be overruled by the national office.

Q: Can a student who discontinues the study of French wear a cord at graduation?

A: As was decided by former President Chiari and supported by the present President Rapp, "As long as he/she has not been involved in any incident which would damage his/her "honor" status, there is no clear reason in the national document to deny the honor cord at graduation." The chapter policy should appear in the local constitution/by-laws.

Q: What can be worn at initiation?

A: Herff-Jones is the current supplier of pins and charms, which some schools attach to a ribbon worn around the neck. The AATF also has appropriate pins, as do a number of national vendors. Many sponsors create their own ribbon symbols of initiation and SHF is working to develop those items.

Q: What about seals?

A: Seals are still available at \$0.10 each. Teachers affix these small gold foil stickers to diplomas, invitations, plain buttons, and the newly designed 8 1/2" X 11" certificate.

Q: What's the competition for study/travel scholarships?

A: Last year we gave ten \$750 travel awards after studying about 50 completed files.

Q: Anything new from the recent meetings of SHF sponsors?

A: Yes, participation in events outside of class, including the AATF's "Le Grand Concours," is now an important part of the travel/study award application.

Q: Who selects the winners?

A: The SHF president (Sharon Rapp), makes the final selection, which usually is very, very difficult because of the quality of applicants.

Q: Who chooses the winners in the Creative Writing Contest?

A: The Executive Secretary of the SHF and a committee picked from his colleagues at the University of Louisiana in Lafayette. (H. Todd Knox)

SHF Elections

Original Ballot required. (See page seven) Voting Postmark
Deadline Date: **December 31, 2000** (two-year term:
January 1, 2001 - December 31, 2002)

Statement of Sharon B. Rapp:

During the last four years we have reviewed and celebrated our fifty-year history and met the goal of 2000 active chapters in the year 2000. Société Honoraire has received additional presence in the **National Bulletin**, in electronic communications, and at regional and inter/national conferences. We have also given thought to the future in the form of a promotional brochure and a sponsor handbook that are on their way to completion.

Société Honoraire de Français honors outstanding performance in the study of French, involves secondary students in French-related activities, affords an opportunity for students to practice leadership skills, supports a longer sequence of study, keeps students in touch with the language when there is a gap between high school and post-secondary experience, and encourages the return to and/or continuation of the study of French at the college/university level.

It is both a trust and a privilege to serve you as National President. I look forward to the opportunity to continue our journey together as we encourage one another and as we work to strengthen each of these important roles of Société Honoraire.

Statement of H. Todd Knox:

As of July 1st I assumed the duties of Ex. Sec. and will attempt to continue the good work of Dr. Stephen Foster. Toward this end, I established some goals: 1) to improve communication with sponsors; 2) to improve turn around time on filling orders; 3) to make ordering the SHF materials more convenient for all concerned. Some streamlining has already taken place. Now all the sponsor's names are in a database which establishes a rapid method of communicating with the membership. Since the former stock of certificates was depleted, a new certificate has been designed. Now, calligraphy can be done at the same time a certificate is generated. The cost for this is now \$0.30 each name, but the time
à suivre à la page quatre

has been reduced from three weeks to a couple of days. Blanks will still be available should you prefer to have your own calligraphy done. There is an SHF seal, 50 for \$5.00, or \$0.10 each, which is usually applied to diplomas but looks very nice applied over the award wreath graphic on the new certificate, should you care to order these. In the near future, Pins, graduation cords, tassels, and T-shirts will be available at the same time student memberships are ordered and hopefully mailed at the same time. The supplier of these materials has tentatively agreed to offer a travel scholarship in the amount of \$750.00 and in tandem with SHF.

Looking forward to a successful year!

C Concours - Creative Writing

NAFTA et le marché commun européen provoqueront des changements mondiaux dans la population et l'économie mondiale. Quels changements interviendront en Amérique du Nord? Quel rôle les Etats-Unis joueront-ils sur la scène du monde? A cette heure, l'anglais et le français sont des langues très importantes dans le monde. Cependant, l'anglais est devenu une plus grande force en commerce mondial et de plus en plus en la diplomatie. Êtes-vous d'accord? La langue française continuera-t-elle à être importante dans les affaires et comme langage de diplomatie? Bien sûr, l'économie globale changera l'arène politique. Est-ce que l'Amérique changera sa politique vis-à-vis un commerce mondial? Le monde s'améliorera-t-il? Le monde s'aggraverait-il? Quels sont vos craintes et vos espoirs pour ce nouveau monde courageux?

Catégorie A = Niveaux I-III

Catégorie B = Niveaux IV-VI

- Chaque école peut présenter trois œuvres par catégorie au concours.
- Veuillez indiquer sur la feuille le nom de l'élève, le nom et l'adresse de son école, le nom de son professeur, et le niveau.
- Pas de travail de groupe, et une seule sélection par élève.
- Texte tapé à la machine, et les présentations ne seront pas rendues
- Un prix monétaire de \$35 sera accordé aux lauréats et nous pourrons tous les lire dans le prochain numéro de L'Élan.
- Date limite: 1 février, 2001, à**
- H. Todd Knox, Executive Secretary
Société Honoraire de Français
Modern Languages PO Box 44347
Lafayette, LA 70504-4347

C Concours- SHF Travel Awards

2001 - \$750 Each

1. Each chapter may submit no more than two applications.
2. The applicant must be a member of the SHF by the application deadline, currently studying French, and possess a good knowledge of the language.
3. Awards must be used for travel, not tuition, course fees, etc. Proof of registration by May 1st *in the program described on, or attached to, the application form* and/or travel reservations may be required before disbursement is made.
4. The applicant must be registered in or able to register in a program approved by the SHF sponsor. Although independent travel is discouraged, exceptions will be made if the applicant and sponsor provide a detailed program of travel/study and justification.
5. Travel must be completed with 12 months of the award deadline (by 2/1/02).
6. Only applications which are complete will be reviewed. The sponsor must mail all the following items in one envelope:
 - Completed **application form**
 - Hand-written **essay**
 - Official **transcript** through first semester 2000-01
 - Letter of recommendation** from current French teacher
 - Letter of recommendation** from another faculty member of the school the applicant is now attending
 - Program prospectus** (or justification)
7. In past years approximately ten (10) awards have been made, each in the amount of \$750.

Postmark Deadline: February 1, 2001
(to the address on the application form)

SHF Calendar of Events

SHF Elections Ballot due Dec. 31, 2000
Travel award appl. due Feb. 1, 2001
Proof of program registration by May 1, 2001
Creative Writing submitted by Feb. 1, 2001

AATF Yearly Convention Dates next 5 years:

2001- Denver, CO July 5-8
2002- Boston
2003- Caribbean
2004- Atlanta (Joint AATF/FIPF)
2005- Québec City

SHF Pins, Cords, Tassels, T-shirts.



Pins, graduation cords, and tassels are available. Inquire for availability and pricing to:

Rolfe Buntaine,

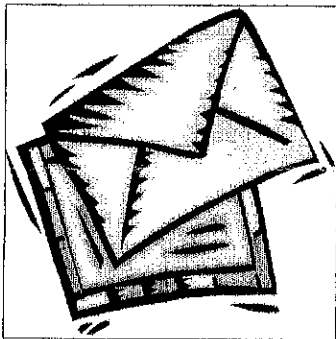
Graduate Sales, PO Box 333,

Conway, AR 72033.

Phone: 888-443-5457; Fax: 501-664-1654;

E-mail: RolfeBun@aol.com.

Chiffres et Lettres



For SHF National President

Sharon B. Rapp
1817 South Blvd.
Conway, AR 72032-6205

E-Mail: sbrapp@conwaycorp.net
Fax: (501) 450-4884

For L'Elan Newsletter Sharon B. Rapp (editor)

Conway High School West
2300 Prince Street
Conway, AR 72032-3749

For Executive Secretary
H. Todd Knox, UL Lafayette
PO Box 44347

Lafayette, LA 70504-4347
Fax: (337) 984-6118
E-mail: htk0718@louisiana.edu

For Jayne Abrate, Executive Director AATF
abrate@siu.edu

See our AATF/SHF web site:
<http://www.aatf.utsa.edu>

SHF Election Ballot: see page three and page four for candidates' statements. Original ballot required. Clip and send to Dr. Jayne Abrate, Executive Director, AATF Mailcode 4510, Southern Illinois University, Carbondale, IL 62901-4510

For the office of President:

_____ Sharon B. Rapp

_____ (write-in candidate)

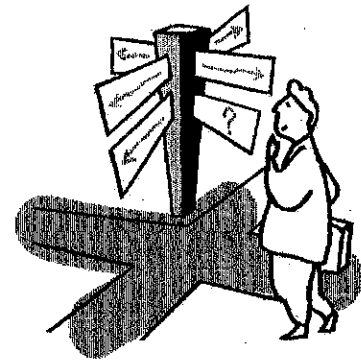
For the office of Executive Secretary:

_____ H. Todd Knox

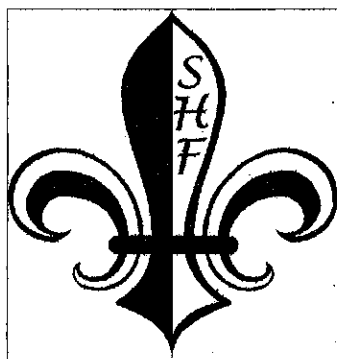
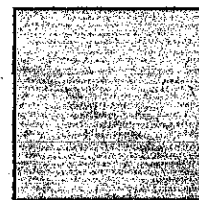
_____ (write-in candidate)

Inside This Issue

- ◆ Report from the President (Page 1)
- ◆ Ballot/candidate statements (Page 3)
- ◆ List of new chapters (Page 1)
- ◆ Chapter Reports (Page 2)
- ◆ Explanation of and application for travel award (Page 4)
- ◆ Explanation of and creative writing topic (Page 4)
- ◆ Address for supplier of graduation materials (Page 7)
- ◆ Questions and answers (Page 3)



H. Todd Knox, Exec. Secretary
Sharon B. Rapp, Editor L'Elan
UL Lafayette, PO Box 44347
Lafayette, LA 70504-4347



L'Elan Bulletin de la Société Honoraire de Français

Sharon B. Rapp, Présidente
H. Todd Knox, Secrétaire Général
Jayne Abrate, Secrétaire de Direction de l'AATF

Application for an SHF Travel Award

This completed form and all supporting materials (see page 4) must be sent in the same envelope, postmarked no later than February 1, 2001, to the address below.

H. Todd Knox, Executive Secretary
Société Honoraire de Français
UL Lafayette PO Box 44347
Lafayette, LA 70504-4347

Applicant's name _____

Home address _____
(street) (city) (state) (zip)

Date of birth _____; Age on 2/1/00 _____; Inducted into SHF _____

Grade point average: Overall _____; In French _____; Rank in class _____ of _____

Class (circle one): 9 10 11 12 Current French course (circle one or two): II III IV V VI AP

Activities and awards: _____

A. Have you participated in the Le Grand Concours (National French Contest)? (circle one) Yes No

B. Have you ever visited a French-speaking country? (circle one) Yes No Year(s) _____

If A or B above is YES, give details: _____

On a separate sheet of paper, state in your own handwriting in French your reasons for applying for this travel award. You must present your own ideas, but a teacher may correct your grammar.

Information below to be completed by the SHF sponsor : _____
(current member of AATF) (sponsor signature)

Sponsor's name _____ Home phone _____

School name _____ E-mail _____

School address _____
(street) (city) (state) (zip)

AATF region (see first pages of *French Review*) _____ Chapter number (see address label) _____

Does your school have a travel/study program? Yes No If YES, date of next trip _____

If NO, what alternative program has been chosen*? _____

Describe briefly and/or attach a prospectus for the school travel/study program the student will be joining (or for the alternative program chosen and the reasons* for which an exception is requested). The program described **must** be the trip to which the stipend will be applied.

Send to Todd Knox, Exec. Sec. SHF, UL Lafayette, PO Box 44347, Lafayette, LA 70504-4347



Initiation Fee/Certificate Order Form

Initiation fee: Please make one check for your order payable to the Société Honoraire de Français. Fee is \$2.00 per student. Please see work sheet below. This fee is paid once and the student remains a member of the SHF as long as she/he is a secondary school student. Chapters may, however, include in their local constitution conditions for continuing membership.

Orders accepted by US Postal Service, Fax transmittal or email. To avoid misunderstanding, no telephone orders!

Initiation Date _____ Sponsor's Name _____

School Name _____ Sponsor's Signature _____

Address _____
Street City, State Zip

In order to communicate swiftly and without misunderstanding the following information is needed.

School Fax _____ E-mail _____

Names of initiates printed neatly or typed. Where there is doubt, no name will be printed on certificate.

First Name then Last Name

- 1. 11.
2. 12.
3. 13.
4. 14.
5. 15.
6. 16.
7. 17.
8. 18.
9. 19.
10. 20.

Improvements have taken place within the SHF. 1) There is a newly designed charter: letter size, landscape configuration, bordered paper, and suitable for framing. 2) There is a newly designed student certificate, letter size, landscape configuration, bordered paper, suitable for framing, and included in the cost of the initiation fee. However, to computer print the initiates' names on the certificates an additional \$0.30 will be charged. All advancements come at a cost, and we hope you will be pleased.

Work sheet:

Table with 4 columns: Description, Quantity, Price, Total. Rows include: Number of initiates (X \$2.00), Number of lettered certificates (X \$0.30), SHF Seals (@ \$0.10 each), Purchase orders over 30 days add (+ \$4.50), If Priority mailing needed add (+ \$3.20), If Express mailing needed add (+ \$11.75).

Total amount enclosed \$ _____

NOTE: Purchase/fax orders will be accepted with the understanding that the account will be settled within 30 days of receipt of the order or a \$4.50 handling fee will be added.

Office use only: PO # _____ Check # _____ Order Received _____ Sent _____

Send to: H. Todd Knox, SHF, UL Lafayette, PO Box 44347, Lafayette, LA 70504-4347

French Honor Society
H. Todd Knox, Ex. Sec.
UL Lafayette, PO Box 44347
Lafayette, LA 70504-4347

140

Fr. Honor Society/M. Const
TAIPEI AMERICAN SCHOOL (1411)
838 Chung Shan W. Rd., Sec. 6
Taipei, Taiwan, ROC